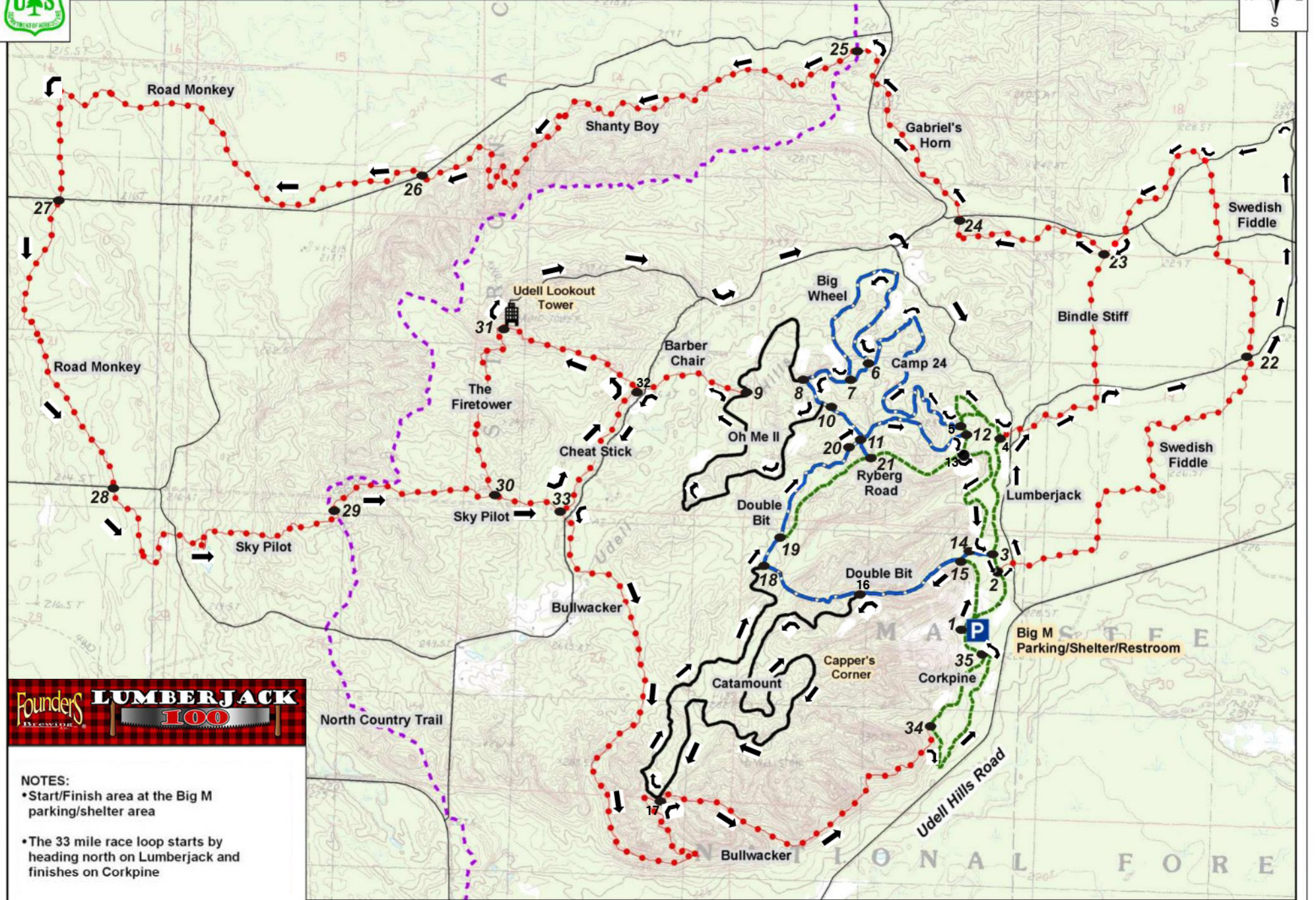




"Big M" Cross Country Ski and Mountain Bike Trail



- NOTES:**
- Start/Finish area at the Big M parking/shelter area
 - The 33 mile race loop starts by heading north on Lumberjack and finishes on Corkpine



During the winter the trail system is maintained by the Manistee Cross Country Ski Council, a non-profit volunteer organization in cooperation with the Forest Service.